

## User's Guide

# KeyGrabber Wi-Fi Premium

**USB 4 GB**  
**PS/2 4 GB**

**inc. Mac Compatibility Pack (MCP)**



Check <http://www.keelog.com/> for the latest version of this document.

## Table of contents

Table of contents.....	2
Getting started.....	2
Introduction .....	3
About the product .....	3
Features .....	3
Requirements .....	3
Applications .....	4
Quick Start .....	5
Recording keystrokes.....	9
Viewing recorded data.....	10
Flash Drive mode.....	10
Text Menu mode (PS/2 version only).....	12
Remote access.....	13
Checklist .....	13
Configuration .....	13
E-mail reporting .....	15
On-demand access.....	16
Clock configuration.....	19
Configuration files.....	21
CONFIG.TXT .....	22
TIME.TXT .....	23
WIFI.TXT .....	24
Mac Compatibility Pack (USB version only) .....	26
National keyboard layouts .....	27
Specifications .....	28
Troubleshooting.....	29
List of special keys .....	32
Legal disclaimer .....	33

## Getting started

### Already familiar with KeyGrabber keyloggers?

⇒ Make your keylogger go on-line in 4 simple steps: section [Quick Start](#)

### New to KeyGrabber hardware keyloggers?

- ⇒ Learn about keystroke recording first: section [Recording keystrokes](#)
- ⇒ Then learn to retrieve the recorded data: section [Viewing recorded data](#)
- ⇒ Finally, get the most out of your Wi-Fi keylogger by configuring WLAN communications: section [Remote access](#)

### Questions or problems?

⇒ Go through the [Troubleshooting](#) section.

## Introduction

### *About the product*

The *KeyGrabber Wi-Fi Premium* is an advanced hardware keylogger with a built-in Wireless LAN communications module. It features a huge 4 GB internal flash disk organized as a file system. All text data typed on the connected keyboard will be captured and stored on the internal Flash Drive in a special file. Text data may be later retrieved in two ways: the classical way through Flash Drive mode and Text Menu mode, or remotely through Wireless LAN. The Wireless LAN functionality allows receiving logged data as E-mail reports, and on-demand via the local TCP/IP network. The *KeyGrabber Wi-Fi Premium* is 100% transparent for computer operation and no drivers are required.

### *Features*

- Background connection to the Internet over a local Access Point
- Automatic E-mail reports with recorded keyboard data
- On-demand access at any time through TCP/IP
- Support for WEP, WPA, and WPA-2 encryption
- 4 Gigabytes of internal memory
- Flash Drive mode available both in USB and PS/2 versions
- Mac Mode ensuring full compatibility with Apple keyboards (MCP version only)
- Memory protected with strong 128-bit encryption
- Quick and easy national keyboard layout support
- Ultra compact and discrete, less than 2 inches (5 cm) long
- Internal clock and battery with over 7 years lifetime guaranteed
- Built-in time-stamping module

### *Requirements*

- Compatible keyboard:  
USB version: USB HID-compliant keyboard (Low-Speed, Full-Speed, or High-Speed)  
PS/2 version: PS/2 compliant keyboard
- Computer with standard USB 1.1 or 2.0 port
- Operating system with USB Mass-Storage device support
- Wi-Fi compliant Access Point coverage (WPA-2, WPA, WEP64/128, or open network)
- Optionally *MS Windows XP/Vista/7/8* (only for running *KL Tools*)

## *Applications*

### **Employers:**

- Monitor acceptable internet usage
- Monitor employee productivity
- Detect unauthorized access attempts
- Backup typed text
- Collect computer usage statistics

### **Parents:**

- Monitor your family's computer activity
- Protect your child from on-line hazards and predators
- Observe WWW, E-mail, and chat usage
- Save a copy of written documents

### **Investigators:**

- Monitor remote computers
- Retrieve unknown passwords, operating system independent
- Collect computer-related evidence
- Detect unauthorized use of computer equipment

## Quick Start

This section assumes you are already familiar with basic hardware keylogger handling, such as recording and retrieving data. It is particularly important to be familiar with Flash Drive mode, as this mode will be used to configure the WLAN functionality. If not, please refer to sections [Recording keystrokes](#), [Viewing recorded data](#), and [Remote access](#) first.

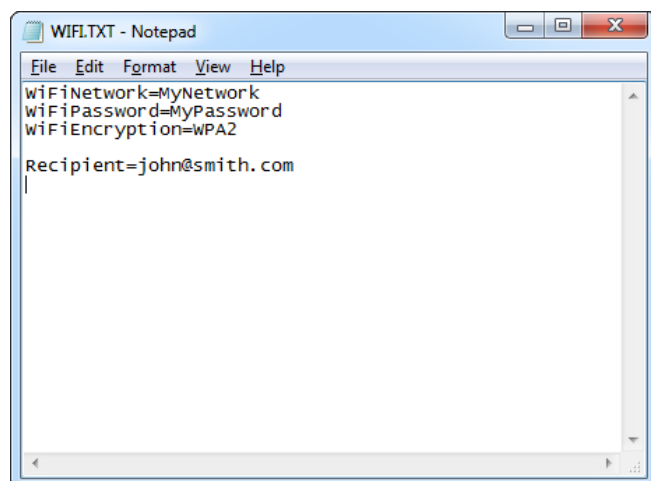
Before you start, make sure you have the following data about the Wi-Fi network the keylogger will operate in:

- WLAN Access Point ID (SSID)
- WLAN encryption type (WPA-2, WPA, WEP64/128, or open network)
- WLAN encryption password

Make sure you also have an E-mail address the wireless keylogger can send reports to.

**Step 1.** Open a text editor (such as *Notepad*) and create a file named WIFI.TXT. This file will later be used to configure the keylogger. Use the following template:

```
wiFiNetwork=MyNetwork  
wiFiPassword=MyPassword  
wiFiEncryption=WPA2  
  
Recipient=john@smith.com
```



Replace *MyNetwork* with the Access Point ID (SSID). Replace *MyPassword* with the WLAN password. Provide the encryption type using one of the following strings: *WPA2*, *WPA*, *WEP64*, *WEP128*, or *None*. Provide the E-mail address you would like to receive reports to after the *Recipient* string. Make sure you provide all strings in a case-sensitive manner.

Finally, save the configuration file as WIFI.TXT.

---

---

# KeyGrabber Wi-Fi Premium

---

**Step 2.** Connect the keylogger and enable Flash Drive mode.

**USB version**



**PS/2 version**

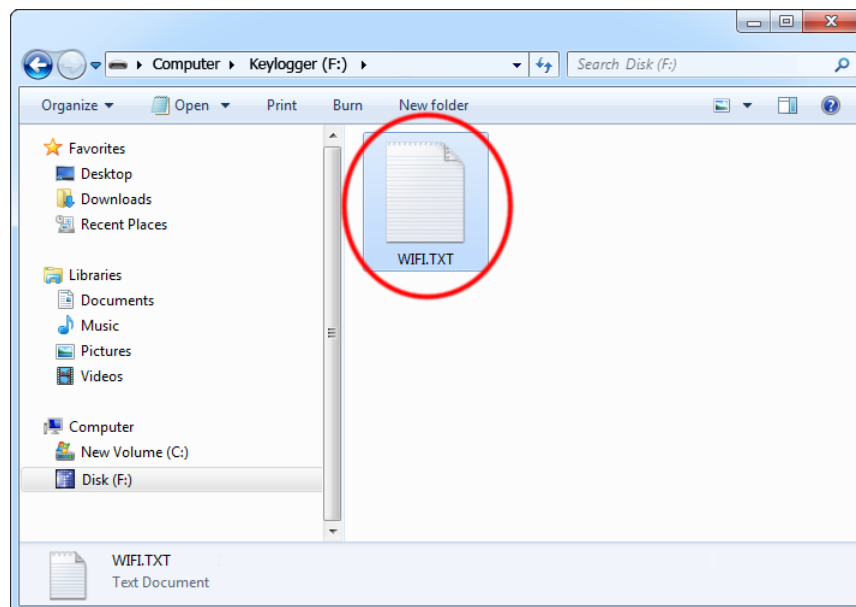


Plug the keylogger in-between the keyboard and USB port, and press the 3-key combination **simultaneously** (by default K, B, S)

Use the supplied USB Download Accelerator to connect the device to a USB port.

After a few seconds, the hardware keylogger will automatically get detected as a mass storage device, and pop up as a removable drive.

**Step 3.** Copy the configuration file WIFI.TXT to the keyloggers Flash Drive.



Then, safely remove the device, and disconnect it from the USB port.

---

---

# KeyGrabber Wi-Fi Premium

---

**Step 4.** Connect the keylogger and the keyboard to start recording keystroke data.

**USB version**



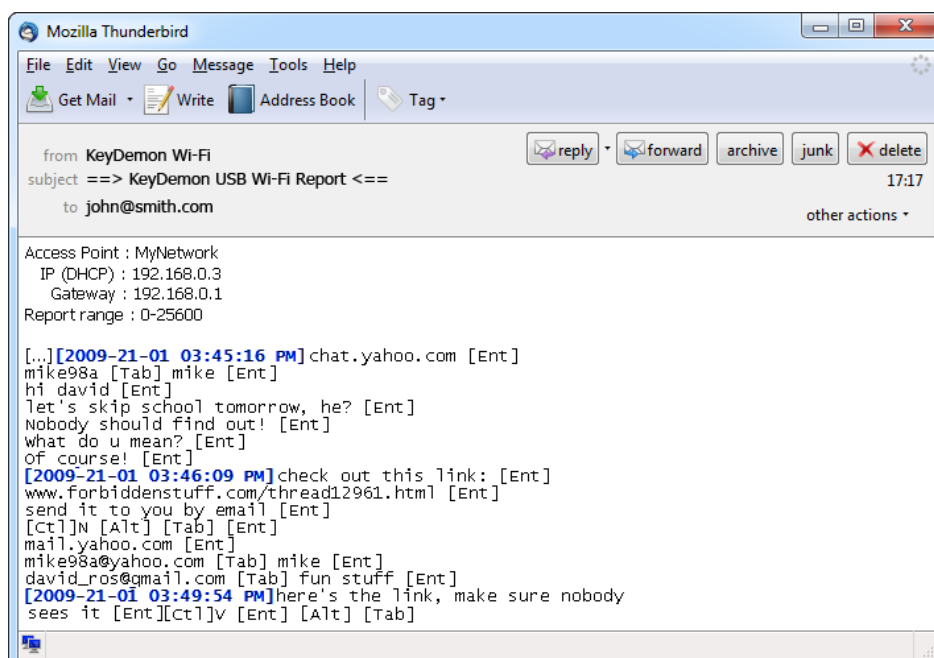
Plug the USB keylogger in-between the keyboard and USB port.

**PS/2 version**

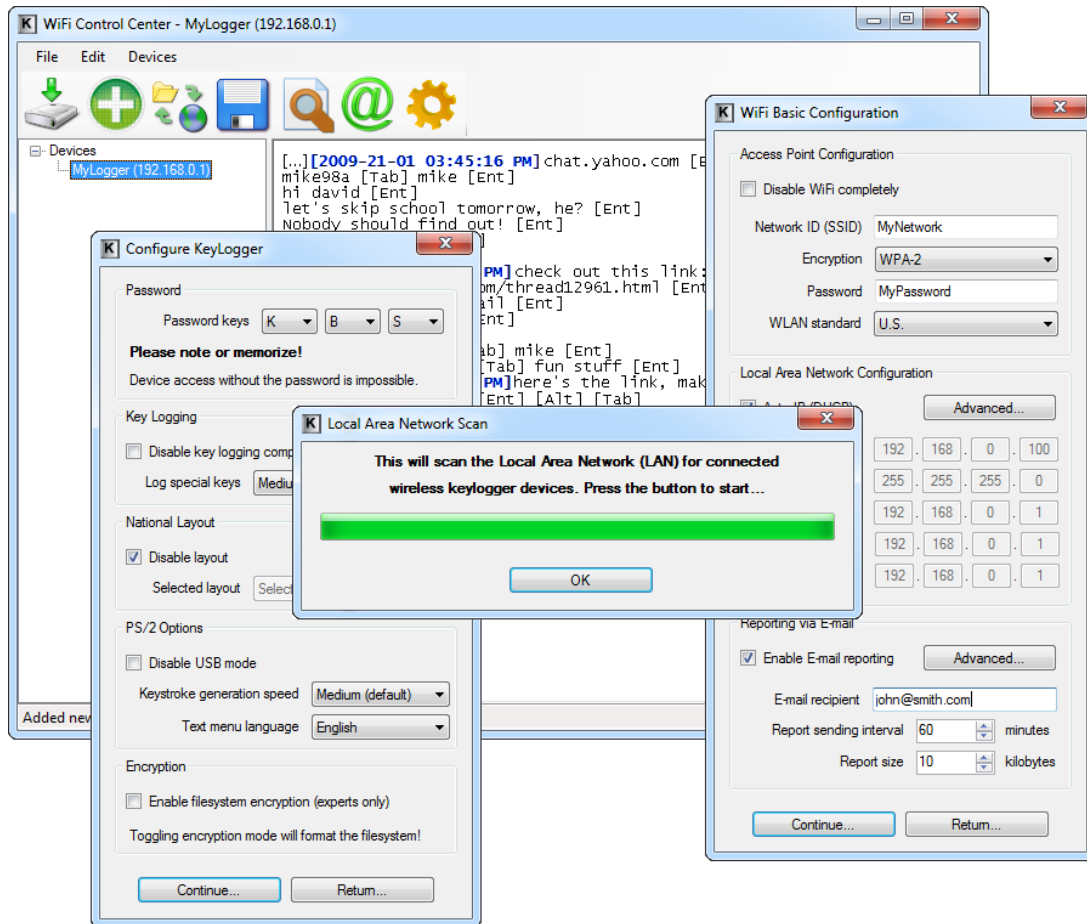


Plug the PS/2 keylogger in-between the keyboard and PS/2 port.

On power-up, the keylogger will automatically connect to the Access Point defined in WIFI.TXT, and send an E-mail report to the specified recipient address every hour. Besides logged keystroke data, the report will contain Access Point information, IP configuration, and time-stamps.



**Step 5.** If E-mail reporting is not enough, you can take full control over the keylogger from any computer in your Local Area Network. Install the supplied application *KL Tools*, add the keylogger to the list by its IP number, and explore the available features.



Using *KL Tools* you can communicate with multiple Wi-Fi hardware keyloggers, allowing creating entire networks of wireless keyloggers. This solution is particularly recommended for monitoring several computers in a household, or controlling employee productivity in companies.

To read more on *KL Tools*, jump to section [Remote access](#).



## Recording keystrokes

Recording mode is the default mode of operation for the *KeyGrabber Wi-Fi Premium* keylogger. In record mode, the device will silently monitor all keystrokes coming from the keyboard and store them on the internal Flash Drive in file LOG.TXT.

Installation of the keylogger in record mode is quick and easy, no software or drivers are required. Simply plug it in between the keyboard plug and keyboard port. Recording will start automatically on power-up.

**USB version**



Plug the USB keylogger in-between the keyboard and USB port.

**PS/2 version**



Plug the PS/2 keylogger in-between the keyboard and PS/2 port.

Note: If an external hub is being used, connect the keylogger between the hub and the USB keyboard.

## Viewing recorded data

Once keystroke data has been recorded, it may be accessed directly or remotely through WLAN. This section covers only direct access, for remote operation refer to section **Remote access**.

### Flash Drive mode

The primary method for viewing recorded data is Flash Drive mode. The keylogger will act as a mass-storage device and pop up as a removable drive. Follow the instructions below.

#### USB version



Plug the USB keylogger in-between the keyboard and USB port...



...and press the 3-key combination **simultaneously** (by default K, B, S)

#### PS/2 version



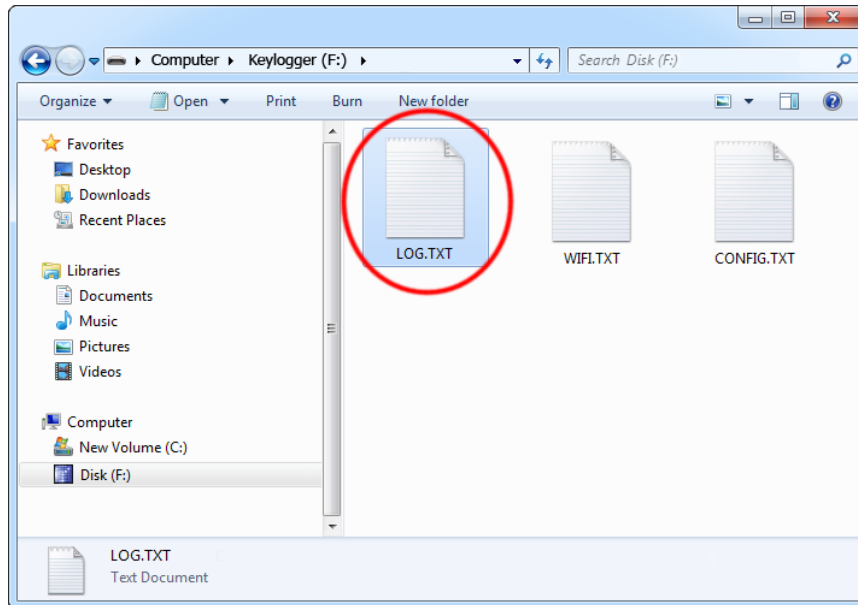
Use the supplied USB Download Accelerator...



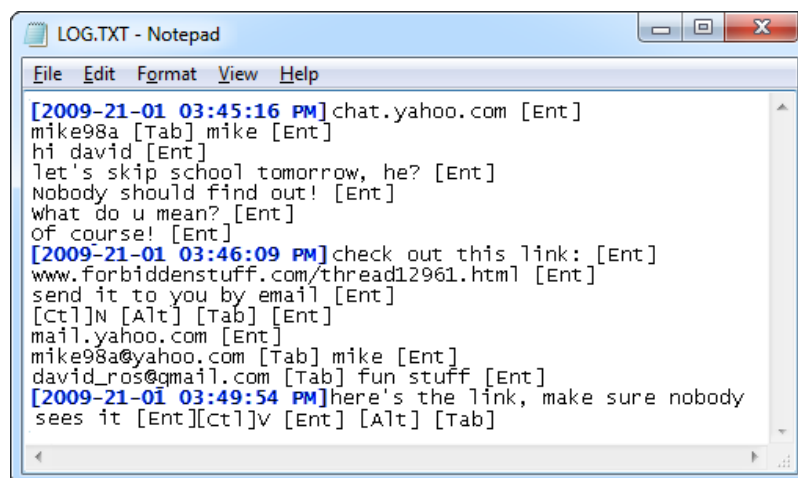
...and connect the device to a USB port.

After a few seconds, the hardware keylogger will automatically get detected as a mass storage device. The operating system will use the standard built-in mass storage driver (*MS Windows 7* in the following examples).

Note: During the first switch to Flash Drive mode, the operating system can ask for drivers. In such case choose automatic driver installation (usually default option).



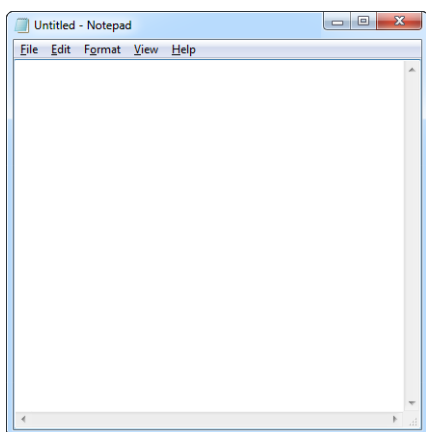
The Flash Drive will contain the file LOG.TXT with a text log of all captured data. Keystroke data is formatted in the same as it would appear on the screen, with special keys in brackets ([Ent], [Esc], [Del] etc.). This file can be viewed and searched with any text editor, such as *Notepad* or *MS Word*.



Switching back to record mode can be achieved by a safe software removal of the flash disk. Use the systems standard disk removal procedure. For *MS Windows*, left-click on the *Safe Removal* icon in the system tray and select the appropriate drive.

## Text Menu mode (PS/2 version only)

The PS/2 version features an alternative approach for memory viewing called Text Menu mode. This mode does not require unplugging the device from the PS/2 keyboard, however is a lot slower than Flash Drive mode. To enable Text Menu mode, the keylogger and PS/2 keyboard should be connected in the same way, as in record mode. A text editor is required, such as *Notepad*.

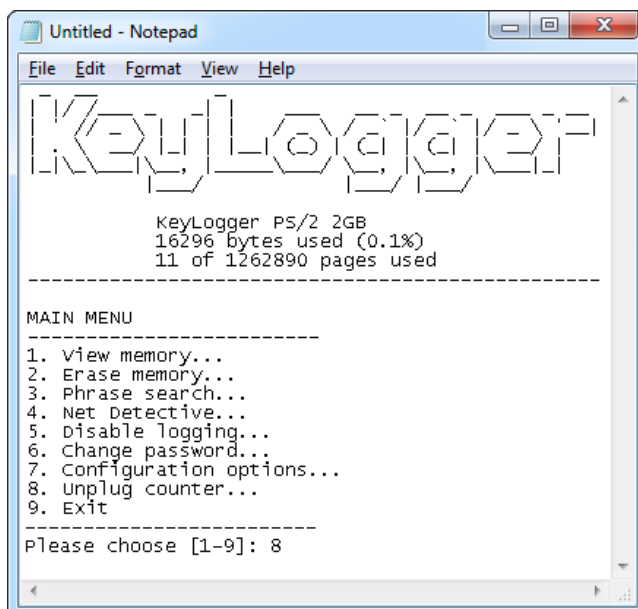


Run the text editor and make it the active application.



Press the 3-key combination **simultaneously** (by default K, B, D)

The keylogger responds by simulating the PS/2 keyboard and will display a text-menu in the editor window.



The displayed main menu shows a summary of memory usage in bytes and pages. The text menu offers a variety of view, search, and configuration options. Use the digit keys to browse around the menu.

Note: do not change the active application while in text-menu mode.

## Remote access

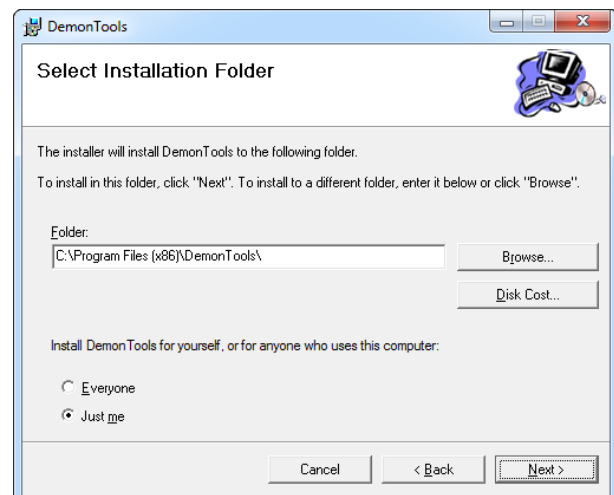
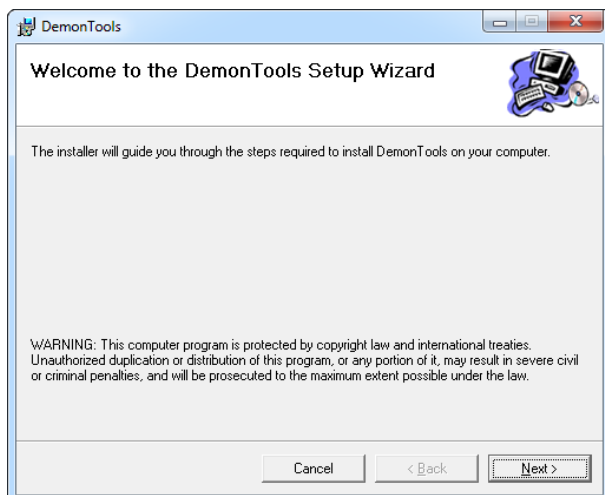
This section guides through enabling E-mail reporting and TCP/IP access for the *KeyGrabber Wi-Fi Premium* keylogger.

### Checklist

Before you start, make sure you have the following data about the Wi-Fi network the keylogger will operate in:

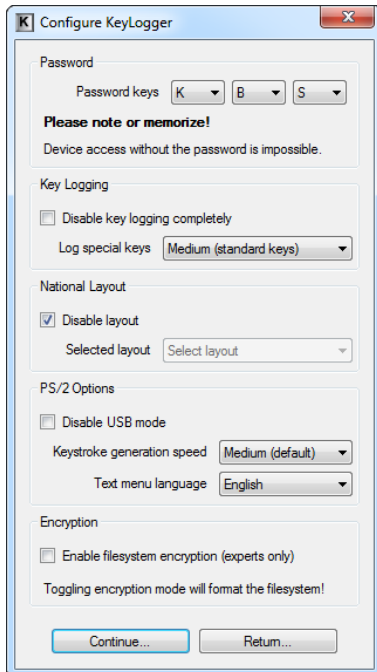
- WLAN Access Point ID (SSID)
- WLAN encryption type (WPA-2, WPA, WEP64/128, or open network)
- WLAN encryption password

Make sure you also have an E-mail address the wireless keylogger can send reports to. Finally, to make the configuration process as simple as possible, install the supplied application *KL Tools*. The installation process is straightforward, just follow the wizard and answer a few standard questions.

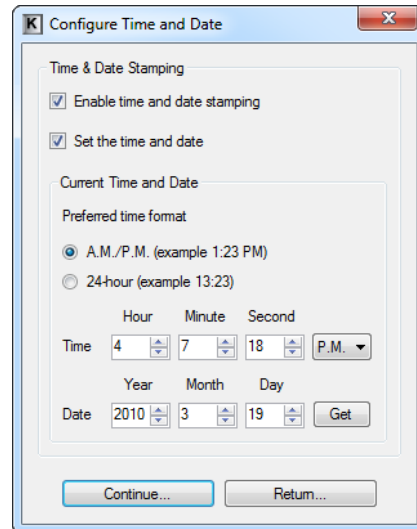


## Configuration

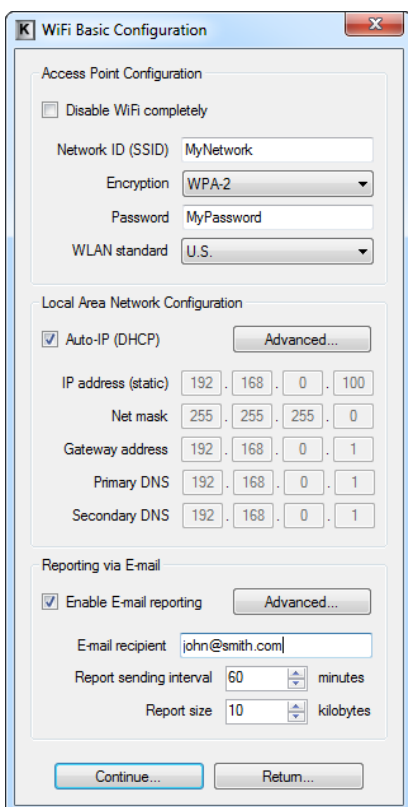
The *KeyGrabber Wi-Fi Premium* can be configured and operated entirely from *KL Tools*. Launch the application, select the device model, and choose to configure your device. The application will first display a keystroke logging configuration dialog, and then a time configuration dialog. If changing the default password, memorize or note the new values, otherwise access to the internal memory will not be possible. If unsure about a certain configuration option, leave the default value.



Keystroke logging configuration



Time-stamping module configuration



Finally, a Wi-Fi configuration dialog will be shown. Enter the data allowing the keylogger to connect to the WLAN Access Point:

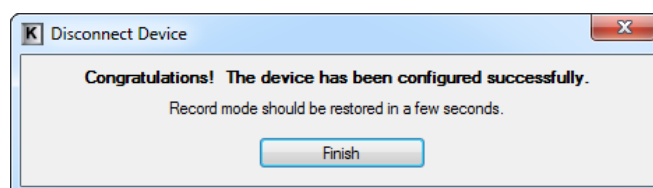
- WLAN Access Point ID (SSID)
- WLAN encryption type
- WLAN encryption password

Remember, that these strings are case-sensitive.

If the WLAN Access Point does not allow Auto-IP configuration through DHCP, provide a static IP address, network mask, gateway address, and DNS information.

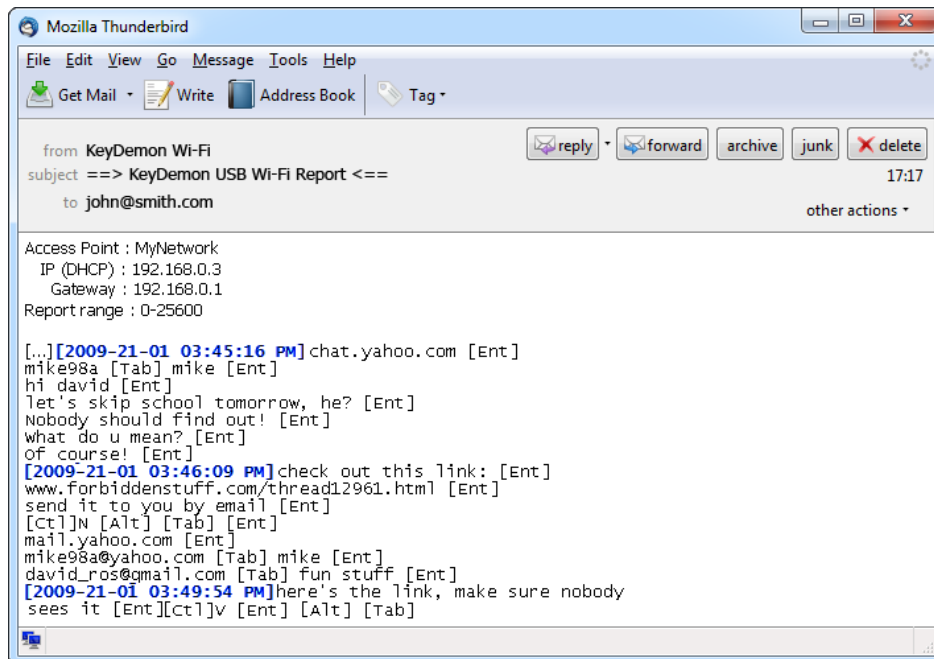
To receive E-mail reports containing keystroke data, supply your E-mail address. You may adjust the reporting interval and report size.

When finished, make sure the device is connected as in record mode. *KL Tools* will automatically create configuration files (CONFIG.TXT, TIME.TXT, WIFI.TXT), prompt for enabling Flash Drive mode, and copy the files to the keyloggers Flash Drive.



## E-mail reporting

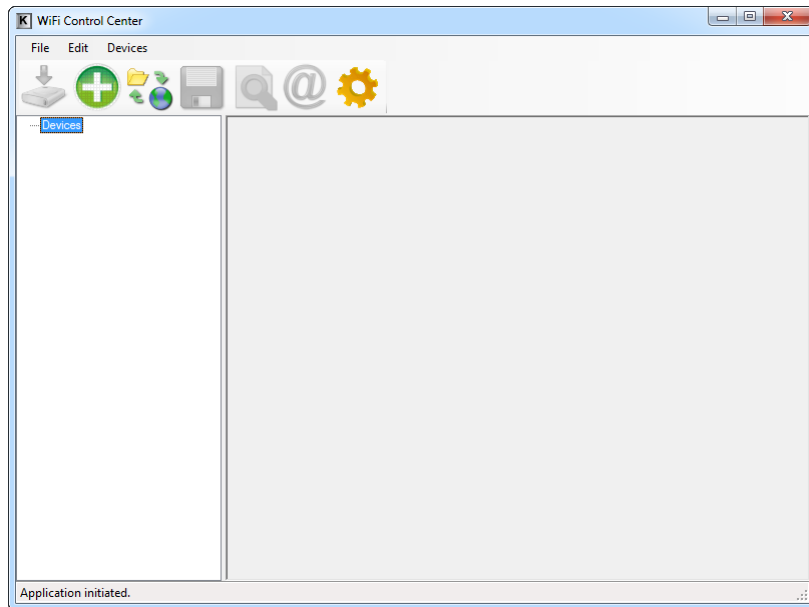
The *KeyGrabber Wi-Fi Premium* will send E-mail reports to the specified recipient address, by default every hour. Besides logged keystroke data, the report will contain Access Point information, IP configuration, and time-stamps.



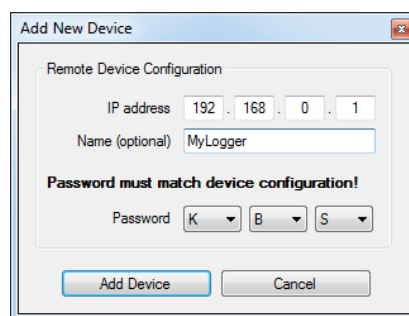
The report size and interval may be set by configuring the keylogger through the file `WIFI.TXT`. Use *KL Tools* to do this, or view section **Configuration files**.

## On-demand access

The *KeyGrabber Wi-Fi Premium* offers on-demand access via TCP/IP from any computer connected to the network. This feature is usually limited to the Local Area Network, unless your local network segment is visible globally. To access the keylogger remotely, launch *KL Tools*, select the proper device version, and navigate through the wizard to remote access. The *Wi-Fi Control Center* will be shown.



A remote device needs to be added first. This can be done by clicking the *Add Device* icon, and supplying the IP address, name (optional), and device password. The password must match the local 3-key combination defined in the devices CONFIG.TXT (K, B, S by default for the USB version, K, B, D by default for the PS/2 version).



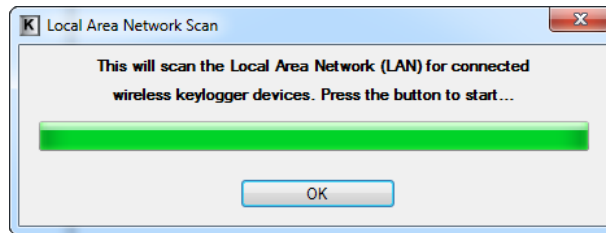
The IP address of the remote device can be obtained in a few ways:

- from an E-mail report (see section [E-mail reporting](#))
- from the device configuration (if using static IP)
- from the Access Point configuration (if using Auto-IP)

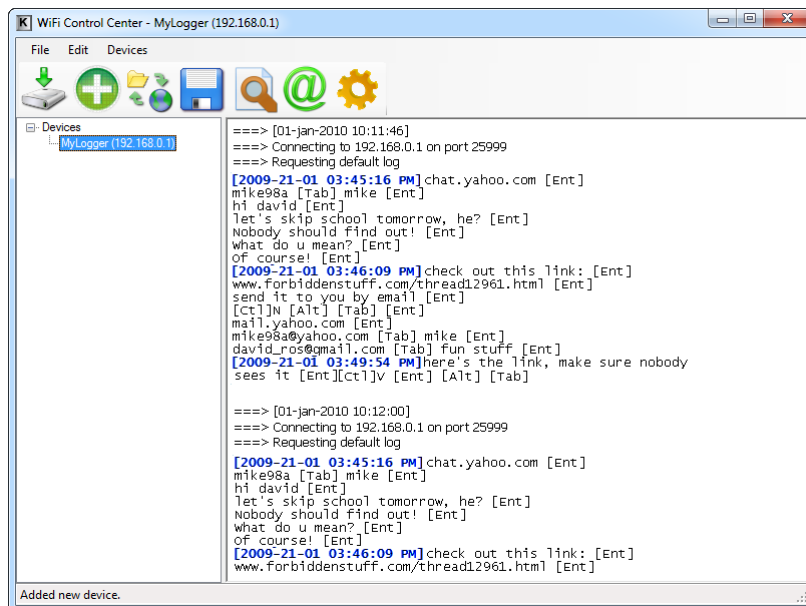
If the IP address is unknown, the *Search Local Network* option can be used. This feature will send a broadcast signal to all devices in the Local Area Network, to which remote keyloggers



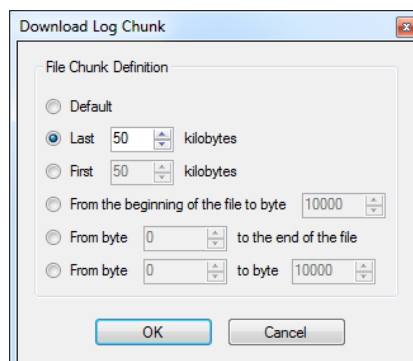
should respond. Make sure that no firewall blocks UDP communication, otherwise the procedure will fail.



Once a remote device is added, the log may be retrieved using the *Download Log* option.



If interested in other parts of the remote log file than the most recent 50 kB, use the *Download Log Chunk* option. This will display a dialog, allowing downloading any part of the remote log file.



*KL Tools* offers a wide variety of options, available at a single mouse-click:

- E-mail and WWW search
- Encoding and layout conversion
- Document searching
- Document exporting
- Communication with remote device
- Multiple device handling

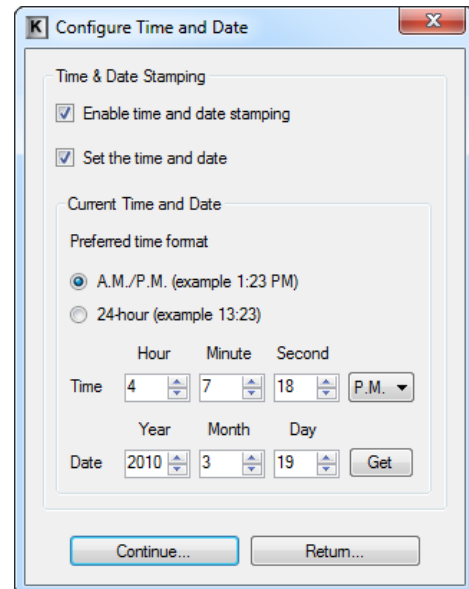
Using *KL Tools* you can communicate with multiple Wi-Fi hardware keyloggers, allowing creating entire networks of wireless keyloggers. This solution is particularly recommended for monitoring several computers in a household, or controlling employee productivity in companies.

## Clock configuration

It is necessary to configure the built-in clock module for getting correct date and time-stamps. This task can be performed by *KL Tools* (recommended), or can be done manually.

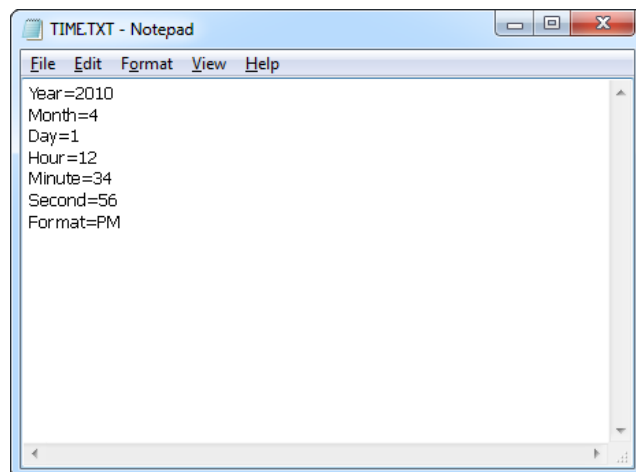
To configure the internal clock using *KL Tools*, launch the application, select the device model, and choose to configure the device. The application will display a time and date configuration dialog. Make sure date and time stamping is enabled, and that the *Set time and date* checkbox is clicked. Select the desired time format, and move to the succeeding dialogs.

*KL Tools* will guide you through enabling Flash Drive mode, and placing the configuration file TIME.TXT on the internal flash disk.

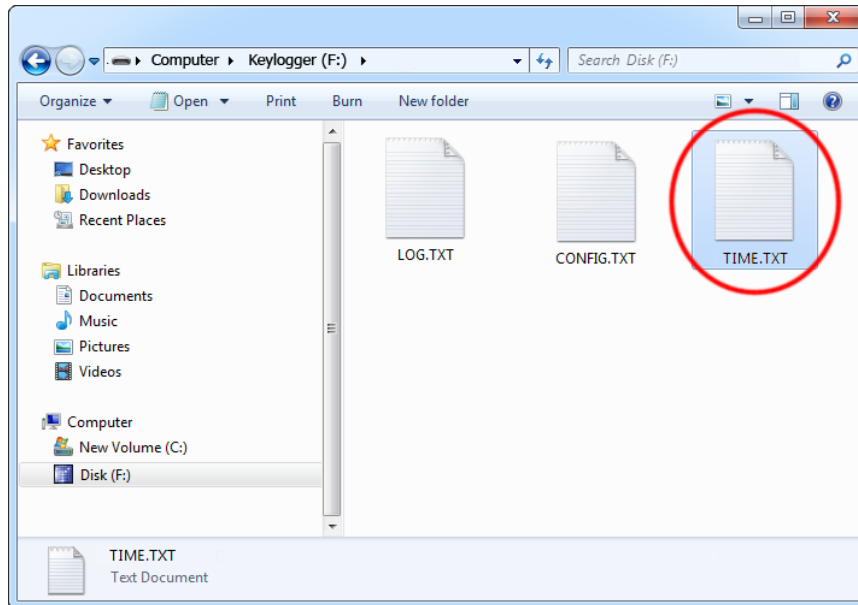


The clock can also be configured manually, without using *KL Tools*. To do this, a text file named TIME.TXT should be prepared with the following format:

```
Year=2010
Month=4
Day=1
Hour=12
Minute=34
Second=56
Format=PM
```



The fields should contain the current time and date. The field *Format* allows distinguishing between A.M., P.M., and 24-hour time (use the value *AM*, *PM*, or *24*). After the file has been prepared, switch to Flash Drive mode and copy the file TIME.TXT to the root folder of the flash disk. For the PS/2 version, the USB Download Accelerator has to be used to switch to Flash Drive mode.



After copying the file, safely remove the Flash Drive. The new clock configuration will be loaded on next power-up.

The clock configuration file must be named TIME.TXT and must be placed in the root folder. Variable and value strings are case insensitive, however they must match the options listed below.

- *Year* sets the clock year value. Valid range is from 2000 to 2099.
- *Month* sets the clock month value. Valid range is from 1 (January) to 12 (December).
- *Day* sets the clock day value. Valid range is from 1 to 31. If the specified day exceeds the maximum number of days in the specified month, the next valid day value will be chosen.
- *Hour* sets the clock hour value. Valid range is from 1 to 12 for 12-hour time (A.M./P.M.), and 0 to 23 for 24-hour time.
- *Minute* sets the clock minute value. Valid range is from 0 to 59.
- *Second* sets the clock second value. Valid range is from 0 to 59.
- *Format* sets the time format. Valid values are *AM*, *PM*, and *24*. If *AM* is chosen, the 12-hour format is selected and the specified hour is treated as before noon. If *PM* is chosen, the 12-hour format is selected and the specified hour is treated as after noon. If *24* is chosen, the 24-hour format is selected and the specified hour is treated as 24-hour format.

Sample TIME.TXT for 12-hour time:

```
Year=2010
Month=10
Day=25
Hour=5
Minute=51
Second=43
Format=PM
```

Sample TIME.TXT for 24-hour time:

```
Year=2010
Month=10
Day=25
Hour=17
Minute=51
Second=43
Format=24
```

## Configuration files

The *KeyGrabber Wi-Fi Premium* is configured via three text files placed on the internal Flash Drive:

- CONFIG.TXT (configures key-logging parameters)
- TIME.TXT (configures the internal clock for time-stamping)
- WIFI.TXT (configures Wi-Fi functionality)

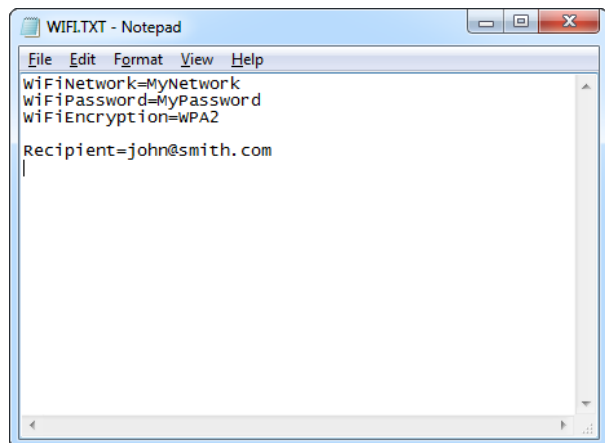
These files should contain configuration parameters, placed in successive lines in the following format:

```
Parameter1=Value  
Parameter2=Value  
Parameter3=Value  
...
```

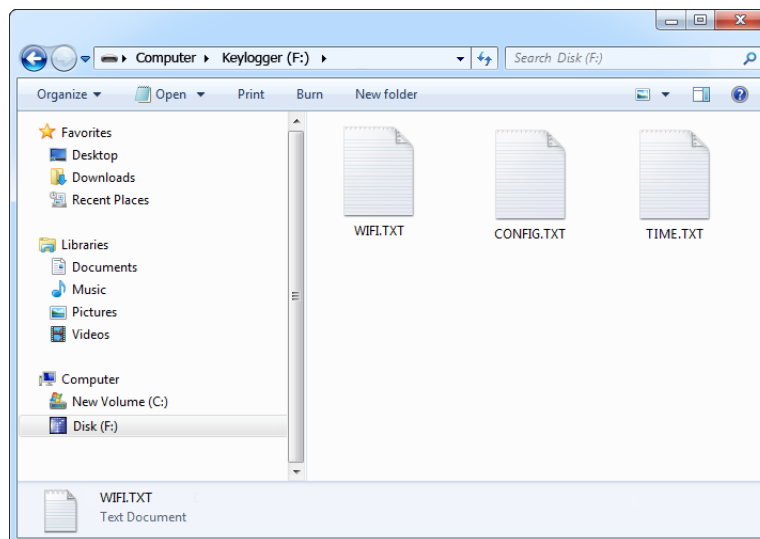
Example of WIFI.TXT

```
wiFNetwork=MyNetwork  
wiFiPassword=MyPassword  
wiFiEncryption=WPA2
```

```
Recipient=john@smith.com
```



These configuration files must be placed in the device internal memory using Flash Drive mode.



Device configuration can be performed by *KL Tools*, or manually by the user. *KL Tools* performs the same operation as would be done manually, that is creates the configuration files, requests switching to Flash Drive mode, and copies the files to the flash disk.

Creating configuration files manually may be necessary on systems not supported by *KL Tools*, such as *Mac OS* or *Linux*.

## CONFIG.TXT

The file CONFIG.TXT is responsible for configuring keystroke-logging parameters.

### Basic parameter list

Parameter	Values	Example	Description
<b>Password</b>	3-character password (default KBS or KBD)	Password=SVL	Three-character key combination for activating Flash Drive / Text Menu modes.
<b>LogSpecialKeys</b>	None Medium (default) Full	LogSpecialKeys=Full	Special key logging level.
<b>DisableLogging</b>	Yes No (default)	DisableLogging=Yes	Keystroke logging disable flag.
<b>DisableLayout</b>	Yes No (default) Menu	DisableLayout=Yes	National layout disable flag (see section <b>National keyboard layouts</b> ).
<b>Timestamping</b>	Yes (default) No	Timestamping=No	Time-stamping disable flag.
<b>DisableUsb</b>	Yes No (default)	DisableUsb=Yes	USB Flash Drive mode disable flag (PS/2 version only).
<b>Language</b>	English (default) Deutsch Espanol Francais Italiano Portugues Polski	Language=Espanol	Text menu language (PS/2 version only).
<b>MacMode</b>	Yes (default) No	MacMode=No	Mac Mode enable flag. Available only on devices with MCP (USB version only).

### Advanced parameter list (use only when you know what you're doing!)

Parameter	Values	Example	Description
<b>Encryption</b>	Yes No (default)	Encryption=No	Flash drive encryption setting (caution: changing this value will re-format the flash drive).
<b>SupportReportProtocol</b>	Yes No (default)	SupportReportProtocol=No	Report protocol support flag (USB version only).
<b>CheckShortFrame</b>	No Low (default) Medium High	CheckShortFrame=No	Short frame fast filter option (USB version only).
<b>CheckModifierByte</b>	Yes (default) No	CheckModifierByte=No	Modifier byte check flag (USB version only).
<b>FrameFilter</b>	Filter value (range 0...255, default 98)	FrameFilter=226	Frame filter value (USB version only).

# KeyGrabber Wi-Fi Premium

<b>KeyboardSpeed</b>	Auto (default) Full Low Mixed	KeyboardSpeed=Auto	USB keyboard speed setting (USB version only).
<b>CheckOverflow</b>	Yes No (default)	CheckOverflow=Yes	Overflow check flag (USB version only).
<b>KeystrokeSpeed</b>	Slow Medium (default) Fast	KeystrokeSpeed=Slow	Keystroke generation speed (PS/2 version only).
<b>DisableMenu</b>	Yes No (default)	DisableMenu=Yes	Text menu disable flag (PS/2 version only).

## TIME.TXT

The file TIME.TXT is responsible for configuring the built-in real-time clock.

### Parameter list

Parameter	Values	Example	Description
<b>Year</b>	Year value (range 2000...2099, default 2010)	Year=2010	Year setting (range 2000 to 2099).
<b>Month</b>	Month value (range 1...12, default 1)	Month=10	Month setting (1 is January, 12 is December).
<b>Day</b>	Day value (range 1...31, default 1)	Day=15	Day setting (range 1 to 31).
<b>Hour</b>	Hour value (range 1...12 or 0...23, default 1)	Hour=6	Hour setting (range 1 to 12 for A.M./P.M. format and 0 to 23 for 24-hour time).
<b>Minute</b>	Minute value (range 0...59, default 0)	Minute=37	Minute setting (range 0 to 59).
<b>Second</b>	Second value (range 0...59, default 0)	Second=49	Second setting (range 0 to 59).
<b>Format</b>	AM PM (default) 24	Format=24	Time format setting. If AM is chosen, the 12-hour format is selected and the specified hour is treated as before noon. If PM is chosen, the 12-hour format is selected and the specified hour is treated as after noon. If 24 is chosen, the 24-hour format is selected and the specified hour is treated as 24-hour format.

## WIFI.TXT

The file WIFI.TXT is responsible for configuring Wireless LAN and TCP/IP functionality. The following tables summarize the available parameters.

### Basic parameter list

Parameter	Values	Example	Description
WiFiNetwork	SSID string (no default)	WiFiNetwork=MyWiFi	Access Point ID (SSID), case-sensitive. If omitted, Wi-Fi functionality will be disabled.
WiFiEncryption	None (default) WEP64 WEP128 WPA WPA2	WiFiEncryption=WPA2	Access Point encryption type. If omitted, Wi-Fi functionality will be disabled.
WiFiPassword	Password string (no default)	WiFiPassword=MyPass	Access Point password, case sensitive. If open network, skip this parameter.
IpAddress	IP address string (no default)	IpAddress=192.168.0.100	Static IP address of device. Skip this parameter if using Auto-IP.
NetMask	Network mask string (no default)	NetMask=255.255.255.0	Network mask of device. Skip this parameter if using Auto-IP.
Gateway	Gateway address string (no default)	Gateway=192.168.0.1	Default gateway. Skip this parameter if using Auto-IP.
DnsServer	First DNS address string (no default)	DnsServer= 216.231.41.2	First DNS. Skip this parameter if using Auto-IP.
DnsServer2	Second DNS address string (no default)	DnsServer2= 206.124.64.1	Second DNS. Skip this parameter if using Auto-IP.
Recipient	E-mail recipient string (no default)	Recipient=john@server.com	Recipient E-mail address for E-mail reporting. If omitted, reporting will be disabled.
ReportInterval	Interval value (min. 600 sec. or 3600 sec., default 3600 sec.)	ReportInterval=7200	Interval for E-mail reporting in seconds. Minimum interval is 600 seconds (10 minutes) for custom SMTP server, and 3600 seconds (1 hour) for default server.
ReportSize	Size value (max. 102400 bytes, default 10240 bytes)	ReportSize=20000	E-mail report size in bytes.
DisableWiFi	Yes No (default)	DisableWiFi=Yes	Wi-Fi disable flag.



## Advanced parameter list (use only when you know what you're doing!)

Parameter	Values	Example	Description
<b>WiFiStandard</b>	US (default) Canada Europe Spain France Japan	WiFiStandard=Europe	Standard for Wi-Fi operation. Select the region that fits best.
<b>DisableTcp</b>	Yes No (default)	DisableTcp=Yes	TCP disable flag. Disables on-demand access through TCP/IP.
<b>TcpPort</b>	Port value (0...65535, default 25999)	TcpPort=12345	TCP communication port. Must match setting in <i>KL Tools</i> .
<b>DisableUdp</b>	Yes No (default)	DisableUdp=Yes	UDP disable flag. Disables answering to broadcasted network searches.
<b>UdpPort</b>	Port value (0...65535, default 25998)	UdpPort=23456	UDP communication port. Must match setting in <i>KL Tools</i> .
<b>DisableSntp</b>	Yes No (default)	DisableSntp=No	SMTP disable flag. Disables E-mail reporting.
<b>CustomSntp</b>	Yes No (default)	CustomSntp=Yes	Custom SMTP flag. Enables user defined SMTP server.
<b>SntpServer</b>	Server string (no default)	SntpServer=smtp.mail.com	Custom SMTP server. Defines user SMTP server address.
<b>SntpUser</b>	User string (no default)	SntpUser=John	Custom SMTP user. Defines user SMTP user name.
<b>SntpPassword</b>	Password string (no default)	SntpPassword=MyPass	Custom SMTP password. Defines user SMTP password.
<b>SntpSender</b>	Sender string (no default)	SntpSender=John Smith	Custom SMTP server. Defines user SMTP sender string.
<b>SntpPort</b>	Port value (0...65535, default 25)	SntpPort=25	Custom SMTP communication port.

Sample Wi-Fi configuration files:

No encryption, Auto-IP

```
WiFiNetwork=MyWiFi
Recipient=john@server.com
```

WPA-2 encryption, static IP

```
WiFiNetwork=MyNetwork
WiFiPassword=MyPassword
WiFiEncryption=WPA2

IpAddress=192.168.0.100
NetMask=255.255.255.0
Gateway=192.168.0.1
DnsServer= 216.231.41.2
DnsServer2= 206.124.64.1

Recipient=john@smith.com
```

## Mac Compatibility Pack (USB version only)

The *Mac Compatibility Pack (MCP)* is a hardware enhancement ensuring full compatibility with *Apple Mac* computers and keyboards. Several *Apple* keyboards are USB High-Speed and Low-Speed combos, creating a challenge for all types of USB keyloggers. The aluminum *Apple A1243* and *A1242* are typical examples:



The *KeyGrabber Wi-Fi Premium* with the *Mac Compatibility Pack* features a special *Mac Mode* (enabled by default), which will convert the keystroke data stream to USB Full-Speed, ensuring proper operation of the keyboard and logging of all keystrokes. *Mac Mode* is compatible with standard keyboards too, so the *KeyGrabber* does not have to be reconfigured.

When enabled, *Mac Mode* will add an additional pass-through USB hub to the system. If this is undesired, *Mac Mode* can always be disabled, restoring normal operation. To disable *Mac Mode*, open the configuration file `CONFIG.TXT` (see section [Configuration files](#)) and add the following entry:

```
MacMode=No
```

This option can also be configured with *KL Tools* (see section [Using KL Tools](#))

## National keyboard layouts

It is possible to enable a national layout for language-adapted keyboards, such as French, German etc. This will allow national characters to get logged properly (including those with Alt Gr), such as ö, æ, ß, ó etc. The following example demonstrates the advantages of applying the German national layout.

### Text logged without layout

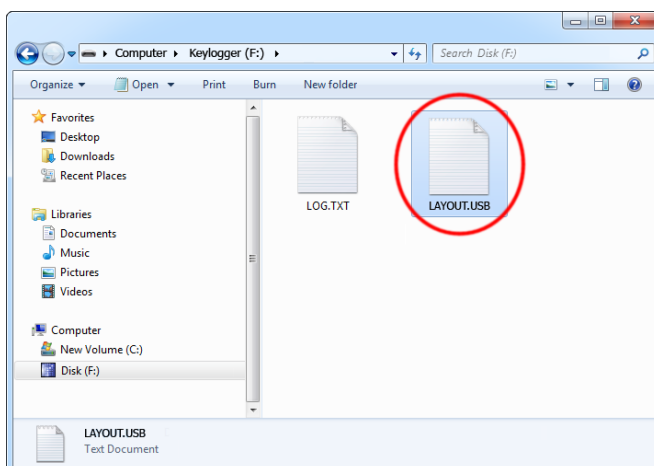
*Kezlogger )PS-2 / USB=*

### Text logged with layout

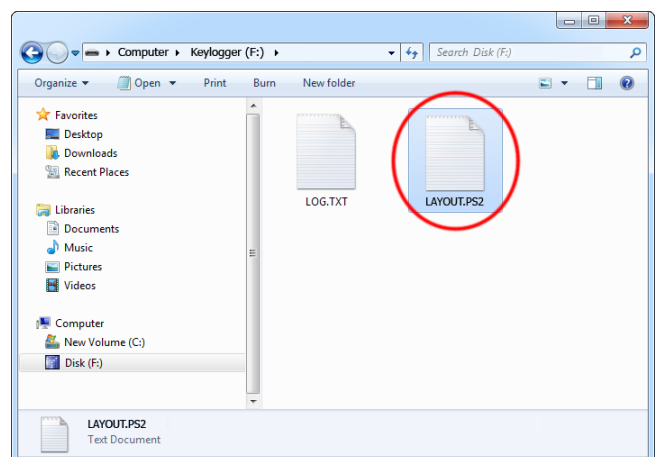
*KeyLogger (PS/2 & USB)*

To enable a national layout, the appropriate layout file named LAYOUT.USB (for USB version) or LAYOUT.PS2 (for PS/2 version) must be placed on the flash disks root folder. The file must be copied in Flash Drive mode. Layout files may be obtained from the CD-ROM attached with the device.

### USB version



### PS/2 version



To enable the layout safely remove the flash disk. During the next power-up, the layout file will be loaded automatically.

## Specifications

	<b>KeyGrabber Wi-Fi Premium USB</b>	<b>KeyGrabber Wi-Fi Premium PS/2</b>
Power supply	4.5 V – 5.5 V DC	4.5 V – 5.5 V DC
Max. power consumption	220 mA (1.1 W)	220 mA (1.1 W)
Maximum burst log speed (approx.)	500 byte/s	500 byte/s
Maximum continuous log speed (approx.)	100 byte/s	100 byte/s
Memory capacity	4 GB	4 GB
Data retention	100 years	100 years
Keyboard support	USB HID-compatible keyboard (Low-speed, Full-speed, High-speed)	PS/2-compatible keyboard
Access Point support	Wi-Fi CERTIFIED™ devices	Wi-Fi CERTIFIED™ devices
WLAN encryption support	WPA-2, WPA, WEP64, WEP128	WPA-2, WPA, WEP64, WEP128
WLAN range	150 m (165 yards) in open terrain, approx. 50 m (55 yards) through one concrete wall	150 m (165 yards) in open terrain, approx. 50 m (55 yards) through one concrete wall
Dimensions including connectors (L x W x H)	53 mm x 20 mm x 12 mm (2.1" x 0.8" x 0.5")	48 mm x 15 mm x 15 mm (1.9" x 0.6" x 0.6")

All KeyGrabber products come with 1 year warranty against manufacturer defects. Defect products must be shipped by the customer. All warranty repairs and delivery to the customer will be paid by the manufacturer.

## Troubleshooting

The *KeyGrabber Wi-Fi Premium* will **not** work with the following hardware configurations:

1. Internal laptop keyboards
2. Bluetooth keyboards
3. USB-PS/2 and PS/2-USB adapters
4. Non-conformant USB or PS/2 keyboards
5. Non Wi-Fi-conformant Access Points (Wi-Fi CERTIFIED™)

### ***The keyboard is not responding***

The keyboard connector or the keylogger connector is not inserted firmly. Please check the connection with the PS/2 or USB keyboard and port.

### ***I'm not receiving E-mail reports***

Please check the following:

1. Have you configured Wi-Fi access by using *KL Tools* or creating WIFI.TXT manually?
2. Have you provided a valid recipient E-mail address? Are you checking the recipient mailbox?
3. Is the Access Point ID (SSID) set correctly? Remember, that it is case-sensitive.
4. Have you configured the encryption type and password correctly (case-sensitive)?
5. Is the remote device within WLAN range? Is the signal strong enough? Please verify this by using a second WLAN device located in the same position.
6. Does the Access Point configuration allow Auto-IP? If not, please provide a static IP configuration.

### ***I cannot retrieve the log using KL Tools***

Please check the following:

1. Have you added the remote device to the device list in *KL Tools* by providing its IP address?
2. Has the remote device established a connection to the Access Point? Check if you are receiving E-mail reports.
3. Have you performed a communication test? Right-click on the device in *KL Tools* and select *Test Communication*.
4. Have you performed a network search? Run a network search from *KL Tools*.
5. Is a firewall blocking communication? Check if the TCP and UDP ports (default 25999 and 25998) are available for communication.
6. Have you provided the correct 3-key combination? The remote device configuration must match the data entered in *KL Tools* (default values are KBS or KBD).
7. Is the remote device located in the same LAN segment as the host computer? If not, TCP/IP communication will not work.

## ***Problems with time-stamps***

Set the correct time using *KL Tools* or by creating a clock configuration file TIME.TXT. Make sure you have not disabled time-stamping. Refer to the **Clock configuration** section for detailed instructions.

## ***Problems with logging national characters***

Please check if you have downloaded the correct layout file and copied it to the flash disk root directory? If not, please check the **National keyboard layouts** section.

## ***The keylogger does not switch to Flash Drive mode (USB version)***

Please check the following:

1. Is the keylogger inserted between the keyboard and the keyboard port on the PC or hub?
2. Is your 3-key combination correct?
3. Are you pressing the 3 keys simultaneously? The 3-key combination will not be accepted if pressed sequentially.

## ***The keyboard doesn't work in Flash Drive mode (USB version)***

This is normal behavior for non-MCP devices. In Flash Drive mode, the keylogger will install the removable disk instead of the keyboard. Use the mouse to copy the log file to the hard drive, then restore normal operation. Alternatively, you may connect the keyboard to a different USB port after switching to Flash Drive mode.

## ***The mouse and keyboard don't work in Flash Drive mode (USB version)***

This can happen on wireless keyboards and keyboard/mouse combos for non-MCP devices. In Flash Drive mode, the keylogger will install the removable disk instead of the keyboard/mouse combo. To get around this, connect the keyboard/mouse to a different USB port after switching to Flash Drive mode.

## ***The USB Download Accelerator does not work (PS/2 version)***

Please check the following:

1. Is the USB Download Accelerator inserted firmly between the keylogger and the USB port?
2. Have you left the keyboard connected to the keylogger? Disconnect the keyboard.
3. Are you giving the device enough time to install? Flash disk installation can take up to 30 seconds, especially during first-time installation.
4. Are you sure you haven't disabled USB mode while configuring the device? Check this using the Text Menu.

## ***Problems with detecting the PS/2 keyboard during system startup (PS/2 version)***

Some systems try to enumerate the keylogger as a USB device before initializing the keyboard. In certain cases on such systems, the keylogger may attempt to switch to Flash Drive mode, disabling the PS/2 keyboard. A simple solution to this problem is to disable USB mode through the configurations options in the Text Menu.

## ***Can I run KL Tools on Mac OS or Linux?***

*KL Tools* is currently only available for *MS Windows*. For configuring the device under *Mac OS* or *Linux*, the configuration files *CONFIG.TXT*, *WIFI.TXT*, and *TIME.TXT* must be created manually, using a text editor.

## ***I've checked everything, nothing helps!***

If you are still experiencing problems, please do the following:

1. Check if the problem appears on a different keyboard.
2. Check if the problem appears on a different computer.
3. Contact the dealer you have purchased the device from. Please supply all necessary information (keyboard model and manufacturer, OS type and version, and a short description of the problem).

## List of special keys

[Esc]	-	Escape	[Prn]	-	Print Screen
[F1]	-	F1	[End]	-	End
[F2]	-	F2	[Scr]	-	Scroll Lock
[F3]	-	F3	[Up]	-	Up
[F4]	-	F4	[Dwn]	-	Down
[F5]	-	F5	[Lft]	-	Left
[F6]	-	F6	[Rgh]	-	Right
[F7]	-	F7	[Num]	-	Num Lock
[F8]	-	F8	[-N]	-	- (num)
[F9]	-	F9	[+N]	-	+ (num)
[F10]	-	F10	[.N]	-	. / Delete (num)
[F11]	-	F11	[/N]	-	/ (num)
[F12]	-	F12	[*N]	-	* (num)
[Ctl]	-	Control	[0N]	-	0 / Insert (num)
[Alt]	-	Alt	[1N]	-	1 / End (num)
[Ins]	-	Insert	[2N]	-	2 / Down (num)
[Hom]	-	Home	[3N]	-	3 / Page Down (num)
[PUp]	-	Page Up	[4N]	-	4 / Left(num)
[PDn]	-	Page Down	[5N]	-	5 (num)
[Del]	-	Delete	[6N]	-	6 / Right (num)
[Win]	-	win	[7N]	-	7 / Home (num)
[Aps]	-	Apps	[8N]	-	8 / Up (num)
[Cap]	-	Caps Lock	[9N]	-	9 / Page Up (num)
[Ent]	-	Enter	[Pwr]	-	Power
[Bck]	-	Backspace	[Slp]	-	Sleep
[Tab]	-	Tab	[wke]	-	wake



## Legal disclaimer

KeyGrabber does not take responsibility for any damage, harm or legal actions caused by misuse of its products. The user should follow the guidelines contained in this document, otherwise no liability will be assumed. It is the user's responsibility to obey all effective laws in his/her country, which may prohibit usage of KeyGrabber products. Please also consider, that not knowing the law does not allow to not obeying it. A good example is the U.S. Department of Justice Letter on Keystroke Monitoring and Login Banners, according to which a clear notice should be displayed, warning that user keystrokes may be logged. Please check with your legal representative for logging requirements in your country.

**For more information on KeyGrabber products,  
visit our website:**

**<http://www.keelog.com/>**

You should not use this device to intercept data you are not authorized to possess, especially passwords, banking data, confidential correspondence etc. Most countries recognize this as a crime. Please consult a legal representative for logging requirements in your country.

Notes:

---

## European Office

### **KeeLog**

Lekcyjna 42  
PL 51-169 Wroclaw  
Poland

<http://www.keelog.com/>  
[keelog@keelog.com](mailto:keelog@keelog.com)

Copyright © 2004-2013. All rights reserved.

## U.S. Office

### **Aqua Electronics**

1550 Louis Ave.  
Elk Grove Village, IL. 60007  
U.S.A

